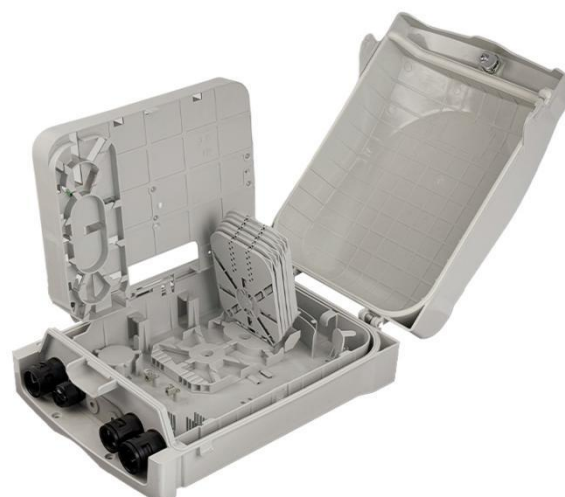


PTE-48

48 Cores Fiber Distribution Box

Application

- **Outdoor Fiber Distribution:** Ideal for FTTH (Fiber to the Home) networks, providing reliable fiber splicing and patching in outdoor environments.
- **Compact Network Installations:** Suited for space-constrained setups, such as pole or wall-mounted deployments in residential or small-scale commercial applications.



Features & Benefits

- **Reliable Sealing:** Achieves IP56, with cable ports sealed using corrugated pipe connectors and silicone rings, meanwhile the upper and lower shells use EPDM sealing strips, allowing for repeated openings and use.
- **Modular Design:** Splice trays and support brackets feature a user-friendly modular design, allowing for the adjustment of fusion tray and bracket quantities based on capacity needs.
- **Powerful Features:** Supports fiber routing, splitting, distribution, branching, docking, and through-tray storage. Can be pole-mounted or wall-mounted.
- **Excellent Material:** The shell is made of modified PC, and the internal metal components are produced with galvanized carbon steel, ensuring a service life of over 20 years (depending on the environment) and exhibiting excellent impact and corrosion resistance characteristics.

Specifications

Part No.	PTE-48
Enclosure Material	PC
Tray Material	ABS
Enclosure Material	PC
Tray Material	ABS
Dimensions (L×W×H)	356.0mm x 263.6mm x 114.5mm
Cable Entry ports	2 (Mid-span Port) x Ø8-14mm
Branch Cable Port	1 x PG13.5
Cable Exit Ports	1 x AD21.2 Corrugated Pipe Joint (M20*1.5)
Cable Exit Ports	2 x AD25 Corrugated Pipe Joint (M25*1.5)
Patching Capacity	48 SC Adapters
Splice Capacity (Max)	72 Fibers
Splice Trays Included	6 Trays
Splice Capacity per Tray	12 Fibers/Tray
Splitter Compatibility	3 x 1:16 Micro PLC Splitter
Mounting Options	Wal Mount / Pole Mount
Operating Temperature Range	-40 ~ +65℃
Relative Humidity	≤93% (+40℃)
Atmospheric Pressure	70~106Kpa
Salt Spray Test	Closed for 168 hours
Protection Rating	IP56
Impact Resistance	IK10

Packing List

Part No.	Carton Size	PCS/CTN	G.W.
PTE-48	56x38x73.5CM	10	27KGS