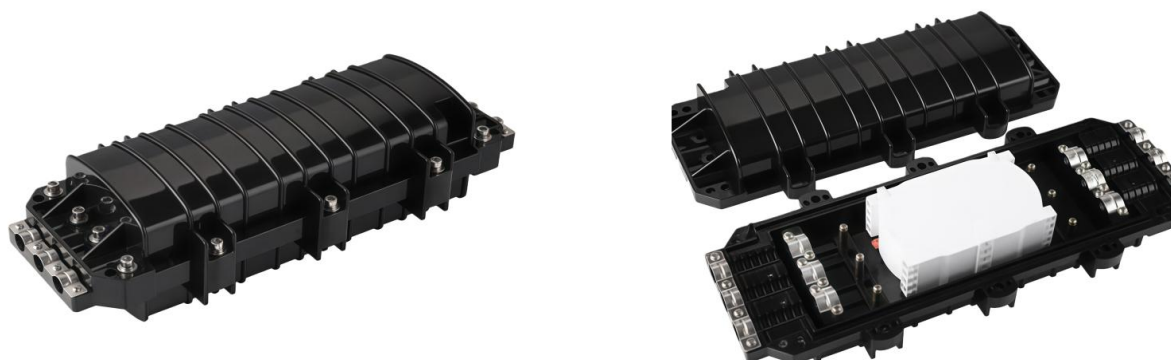


GJS-H3346C

3-IN 3-OUT In-line Fiber Optic Splice Closure



Application

- **Versatile Network Deployment:** Engineered for protecting optical fiber splices in straight-through and branching applications, supporting aerial, duct, and direct buried installations.
- **Infrastructure Adaptability:** Ideal for FTTH access networks and backbone transmission, providing a robust environment for fiber management in harsh outdoor conditions.




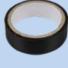


Key Features

- **High-Strength Construction:** Manufactured from premium engineering plastics (MPP or PC) offering superior resistance to chemical erosion (acid, alkali, and salts) and long-term UV aging.
- **Advanced Environmental Protection:** Rated at IP68, ensuring complete protection against dust ingress and continuous immersion in water.
- **High-Capacity Fiber Management:** Supports up to 144 single-core fibers across a maximum of 6 splice trays (24FO per tray).
- **Optimized Bend Radius:** Splice trays feature a "booklet" design for easy access, ensuring a minimum fiber bending radius of 40mm to prevent signal attenuation.
- **Reliable Sealing System:** Utilizes a high-quality silicon rubber sealing mechanism for the shell and specialized rubber seals for inlet/outlet ports to ensure long-term airtightness.
- **In-Line Configuration:** Features a 3-In/3-Out port design accommodating cable diameters ranging from 8mm to 22mm.
- **Wide Temperature Resilience:** Maintains structural integrity and sealing performance across a broad operating temperature range of -40°C to +60°C.

Specifications

Part No.	GJS-H3346C
Dimensions (L×W×H)	460 × 190 × 120 mm
Enclosure Material	MPP or PC
Cable Sealing Method	Rubber Grommet
Cable Entry/Exit Ports	3 / 3 (In-line)
Port Diameter	Ø8 - 22 mm
Splicing Capacity	288 Fibers (Single-core)
Number of Trays	6 Trays (Max)
Tray Material	ABS
Inflating Valve	Pre-installed (Optional)
Grounding Device	Pre-installed (Optional)
IP Rating	IP68
Mounting	Aerial / Direct-buried

Accessories

Picture	Name	Size	Quantity
	Aerial Kit (for Aerial Only)	/	2 Pairs
	Rubber Block	/	6 PCS
	Splice Sleeve	1.2/60mm	24 - 144 PCS
	Nylon Cable Tie	3×100mm	10 PCS
	Electrical Insulation Tape	/	1 Roll
	Sealing Compound	/	1 Roll
	Hex Wrench (L Type)	M5	

Packing List

Part No.	PCS/CTN	G.W.	Carton Size
GJS-H3346C	10	26 KG	62×48×42 CM