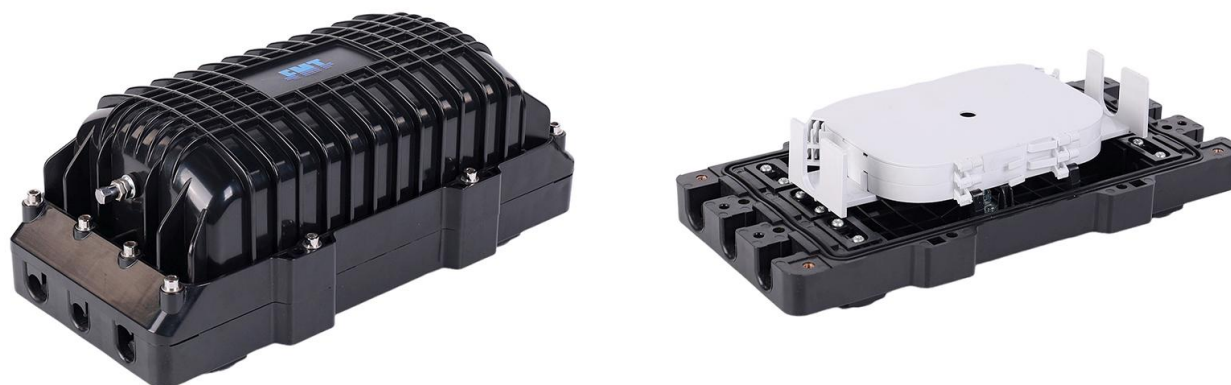


## GJS-H3305E

### 3-IN 3-OUT In-line Fiber Optic Splice Closure

#### Application

- GJS-H3305E Fiber Optic Splice Closure serves as a key user access point device, enabling protective connection and distribution between multiple cables.
- Ideal for linking distribution cables and indoor cables in outdoor environments, widely applicable in communication systems, cable TV networks, and optical cable infrastructure.










#### Key Features

- High-quality engineering plastic (PC, PC+ABS, ABS) housing with robust structural strength for long-term outdoor use.
- IP68-rated waterproof design, suitable for both underground burial and aerial installations.
- 5 splice trays (24 cores per tray) supporting a total capacity of 120 cores, with efficient fiber management.
- Optimized fiber routing ensures proper curvature radius and sufficient storage space to prevent signal loss.
- 3+3 inlet/outlet ports with screw mechanical sealing for secure cable connections..

## Specifications

Part No.	GJS-H3305E
Dimensions (L×W×H)	369×186×146 mm (14.53×7.32×5.75 in)
Material of Enclosure	PC or PC+ABS
Cable Sealing Method	Rubber Grommet
Cable Entry/Exit Ports	2 / 2 (In-line)
Port Diameter	Ø14.5 mm & Ø12 mm & Ø9.5 mm
Splicing Capacity (Max)	120 Fibers (Single-core)
Number of Splice Trays (Max)	5 Trays
Material of Trays	ABS
Inflating Valve	Pre-installed (Optional)
Grounding Device	Pre-installed (Optional)
IP Rating	IP68
Mounting	Aerial / Underground

## Accessories

Picture	Name	Size	Quantity
	Aerial Kit (for Aerial Only)	/	2 Pairs
	Nylon Cable Tie	3*100mm	20 PCS
	Splice Sleeve	1.2/45mm	12 -120 PCS (Optional)
	Electrical Insulation Tape	/	1 Roll
	Sealing Compound	/	1 Roll
	Hexagon Wrench (L Type)	M5	1 PC
	Nut Wrench	/	1 PC

## Packing List

Part No.	Carton Size	PCS/CTN	G.W.
GJS-H3305E	40×40×50 CM	6	17 KG