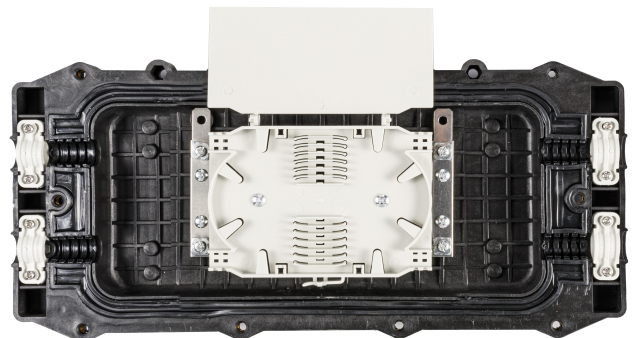


GJS-H2201

2-IN 2-OUT In-line Fiber Optic Splice Closure

Application

- Designed for **outdoor optical networks**, providing secure splicing and protection for up to 96 fibers in harsh environments.
- **IP68-rated** for aerial (supports Figure 8 cables), manhole mounting, duct, and direct burial applications.



Key Features

- IP68 compliant, prevents dust/water ingress.
- Two-piece shell (upper/lower case) with reusable rubber seals.
- Max 96C Capacity - can accommodate up to 4 splice trays (24 fibers/tray), tool-free access.
- 2+2 In-line ports (max. Ø17mm), automatic clamps, stainless steel strength member fixation.
- Single-Tool Operation - Hex bolt tightening for rapid sealing.

Specifications

| Part No. | GJS-H2201 |
|------------------------------|---|
| Dimensions (L×W×H) | 404×190×88 mm (15.91×7.48×3.46 in) |
| Material of Enclosure | MPP |
| Cable Sealing Method | Rubber Grommet |
| Cable Entry/Exit Ports | 2 / 2 (In-line) |
| Port Diameter | Ø17mm |
| Splicing Capacity (Max) | 96 Fibers (Single-core) |
| Number of Splice Trays (Max) | 4 Trays |
| Material of Trays | ABS |
| Inflating Valve | Pre-installed (Optional) |
| Grounding Device | Not Supported |
| IP Rating | IP68 |
| Mounting | Aerial / Manhole / Duct / Direct Buried |

Accessories

| Picture | Name | Size | Quantity |
|---|---------------------------------|----------------|-----------------------------------|
|  | Aerial Kit (for Aerial Only) | / | 2 Pairs |
|  | Nylon Cable Tie | 3*100mm | 6 PCS |
|  | Splice Sleeve | 1.2/45mm | 12 per Tray Ordered (Optional) |
|  | Electrical Insulation Tape | / | 1 Roll |
|  | Mastic Sealant | 500mm (length) | 1 Roll |
|  | Desiccant Bag | / | 1 Bag |
|  | Allen Wrench | M5 | 2 PCS/CTN |
|  | Installation Manual | A5 | 1 PC |

Packing List

| Part No. | Carton Size | PCS/CTN | G.W. |
|-----------|-------------|---------|-------|
| GJS-H2201 | 64*43*45CM | 10 | 21 KG |