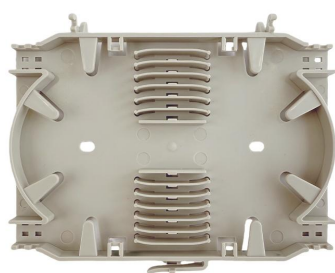


# FST-24S-042

## Fiber Optic Splice Tray, Hinged, 24-Fiber, Single Fusion



### Application

- For use with GJS-H2201 Fiber Optic Splice Closure.
- For use with FDB-T224B Series Fiber Distribution Box.
- For use with FDB-T224C Series Fiber Distribution Box.

### Features & Benefits

The FST-24S-042 is a high-performance fiber optic splice tray engineered for high-density fiber management within splice closures and distribution boxes. Its optimized design ensures strict adherence to bend radius requirements in any installation environment, delivering reliable and superior transmission performance.

- **Hinged Design:** Featuring a hinged stacking structure, the trays can be opened like a book. This allows users to easily access any specific layer without disturbing other trays, significantly simplifying routine maintenance.
- **Fiber Protection:** The internal architecture is strictly designed to maintain the minimum bend radius, ensuring minimal signal attenuation and long-term network integrity.

### Specifications

Part No.	FST-24S-042
Access Type	Hinged
Splice Capacity	12 / 24 Fibers
Splicing Method	Single Fusion (Heat Shrink)
Dimensions (H × W × H)	144 × 100 × 10 mm
Fiber Bend Radius	≥30mm
Material	ABS or PC+ABS
Sleeve Compatibility	40 - 45 mm
Tray Cover	Plastic (Top) / Transparent (Intermediate)