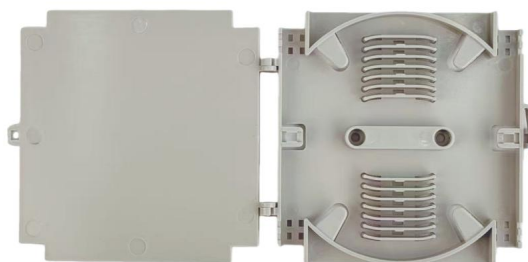
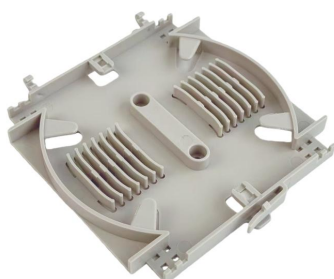


FST-24S-034

Fiber Optic Splice Tray, Hinged, 24-Fiber, Single Fusion



Application

- For use with GJS-HF96-8B Fiber Optic Splice Closure.

Features & Benefits

The FST-24S-034 is a high-density management tray designed to organize and protect fiber splices within a single, compact footprint. It provides an efficient solution for fiber distribution and terminal management in network deployments where space efficiency and ease of maintenance are critical.

- High-Density Splice Management:** Features specialized dual-bank splice slots supporting up to 24 FO single fusion, maximizing splicing capacity within a slim 110 x 114 mm profile.
- Hinged Access & Scalability:** The hinged stacking design allows for independent "book-like" flipping, ensuring easy access to any individual tray or splice without disturbing adjacent fibers in the stack.

Specifications

Part No.	FST-24S-034
Access Type	Hinged
Splice Capacity	12 / 24 Fibers
Splicing Method	Single Fusion
Dimensions (H × W × H)	114 × 110 × 10 mm
Fiber Bend Radius	≥30mm
Material	ABS or PC+ABS
Sleeve Compatibility	40 - 45 mm
Tray Cover	Plastic (Top) / Transparent (Intermediate)