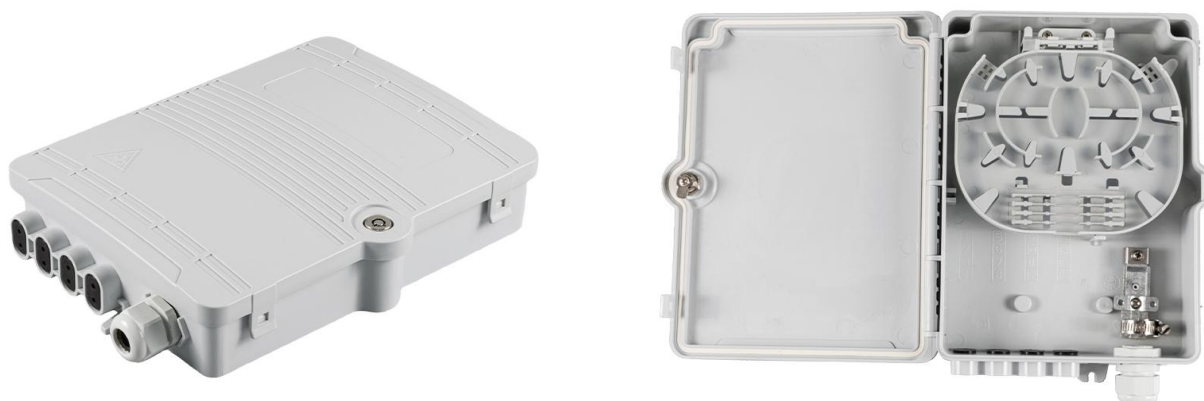


## FDB-T213

### 8-Core FTTH Distribution Box

#### Application

- The FDB-T213 Outdoor FTTx Distribution Box is engineered for fiber optic management in FTTx networks, providing mechanical protection for splicing, patching, and integration of passive components (such as 1×8 micro PLC splitters).
- IP55-rated to resist dust and low-pressure water jets, making it suitable for both indoor and outdoor installations, including wall-mounted or pole-mounted setups.



#### Features & Benefits

- **Durable Construction:** Made of high-quality engineering plastic, ensuring resistance to environmental stress and long-term performance in harsh outdoor conditions.
- **Compact Design:** Space-efficient dimensions (213×163×47 mm) fit seamlessly into tight installation spaces, ideal for urban or constrained environments.
- **Versatile Capacity:** Supports up to 8 SC adapters and 8 fibers for splicing, compatible with 1×8 micro PLC splitters to meet FTTx distribution needs.
- **Secure Access:** Equipped with a standard key lock to prevent unauthorized access, enhancing security for fiber connections.
- **Flexible Mounting:** Compatible with wall-mounted or pole-mounted installations, adapting to diverse project requirements..

## Specifications

Part No.	FDB-T213
Dimensions	213×163×47 mm
Material	ABS or PC/ABS
Main Cable Ports	1 × PG13.5
Drop Cable Ports	8 ports (2×3mm)
Patching Capacity	8 SC Adapter
Splicing Capacity	8 Fibers (Single-core)
Splice tray	1 Tray
Suitable Splitter	1×8 micro PLC splitters
IP Rating	IP55
Mounting	Wall / Pole Mount

## Standard Accessories

Picture	Name	Size	Quantity
	Wall-mounting Kit (for Wall mount Only)	/	2 Pairs
	Pole-mounting Kit (for Pole mount Only)	Clamp: Ø216mm	2 Pairs
	Splice Sleeve	1.2/45mm	8 PCS
	Nylon Cable Tie	3×100mm	8 PCS
	Key	/	1 PC

## Packing List

Part No.	Carton Size	PCS/CTN	G.W.
FDB-T213	46×36×30 CM	20	10 KGS