

FDB-24Z

24 Cores Fiber Distribution Box

Application

- Engineered for FTTH, PON, and OBD cabling systems, supporting splicing, splitting, and distribution.
- IP65-rated enclosure ensures reliable performance for indoor and outdoor installations with wall or pole mounting.



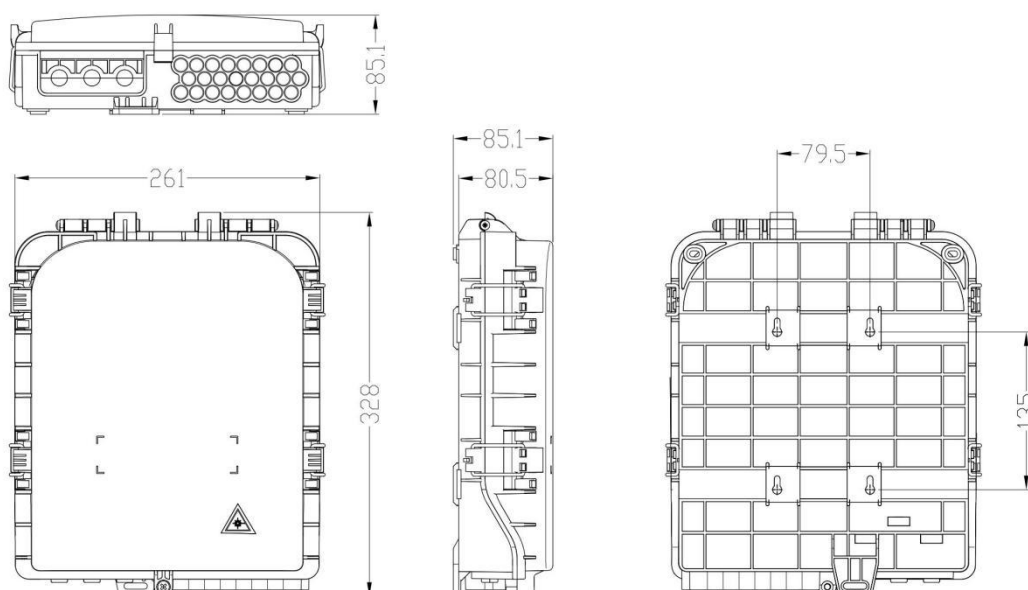
Features & Benefits

- Constructed from durable PC+ABS or ABS for robust environmental resistance.
- Supports up to 72 fiber splices across three trays for high-capacity fiber management.
- Accommodates up to 24 SC adapters for extensive connectivity.
- Compatible with 1x8 or 1x16 micro PLC splitters for efficient signal distribution.
- Features integrated splice cassette and cable management rods for organized fiber routing.
- Ensures fiber bend radius control (>40mm) for optimal performance.
- Designed for easy maintenance and capacity expansion with efficient cable management.

Specifications

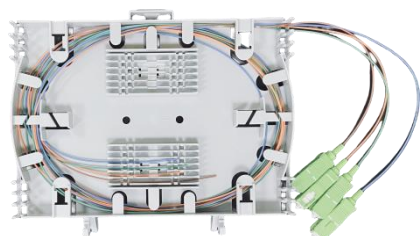
Part No.	FDB-24Z
Dimensions	328×261×85 mm
Enclosure Material	PC+ABS
Cable Entry Ports	3 Mid-span ports × Ø15mm
Cable Exit Ports	24 Drop ports × Ø2-10mm
Patching Capacity	24 SC Adapters
Splicing Capacity	72 Fibers (Single-core)
Splice Tray	3 Trays
Suitable Splitter	1×8 or 1×16 Micro PLC Splitters
Material of Tray	ABS
IP Rating	IP65
Mounting	Wall / Pole Mount

Dimension Drawing



Splice Trays & PLC Splitter Module

Two Splice Module:



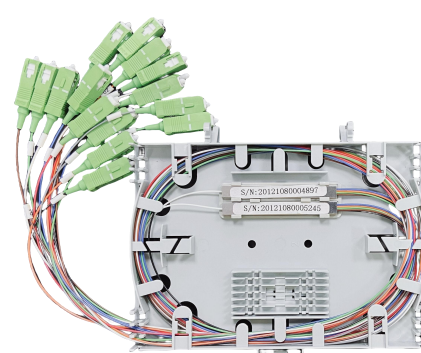
12 Slots for 12/24 Fusion splices

One Splitter Module (for 1x16 PLC)



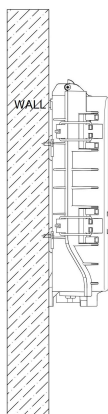
One 1×16 Micro PLC Splitter

One Splitter Module (for 1x8 PLC)

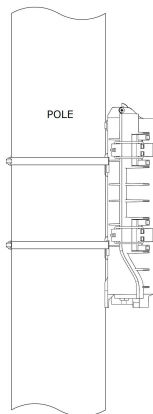


Two 1×8 Micro PLC Splitters

Wall-mounted & Pole-mounted



Wall Mount



Pole Mount

Accessories



Packing List

Part No.	Carton Size	PCS/CTN	G.W.
FDB-24Z	48×35×57CM	10	17 KG