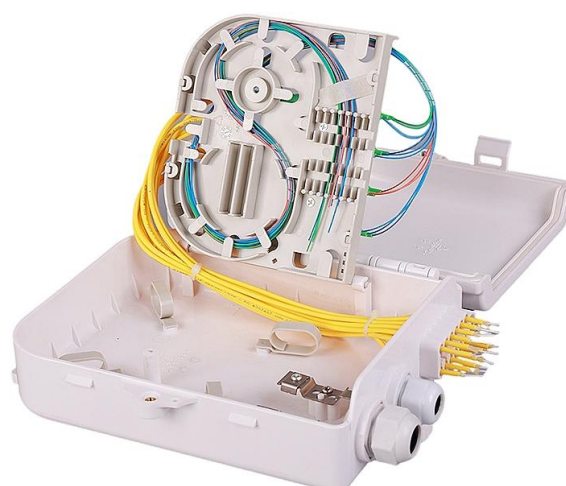


FDB-12E

12-Core Optical Distribution Box

Application

- Used as a key distribution and connection hub in FTTH networks, facilitating fiber splicing, patching, and integration of PLC splitters for residential, commercial, or utility fiber-to-the-home deployments.
- IP55-rated to resist dust and low-pressure water jets, suitable for both wall-mounted and pole-mounted installations in indoor or outdoor environments.



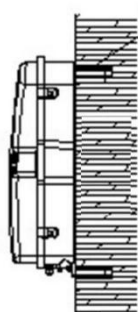
Features & Benefits

- Supports 8/16 fusion splices, accommodating diverse splicing needs; fits 12 SC or LC adapters for patching, and compatible with 1:8 or 1:16 PLC splitters for signal distribution.
- Combines splice tray, distribution tray, and splitter housing into a single integrated tray, with dedicated compartments for splicing and patching—eliminating fiber interference during drop cable connections.
- Constructed from high-quality ABS or PC/ABS engineering plastic, ensuring resistance to environmental stress, UV radiation, and physical impact for long-term reliability.
- Designed for easy installation, with flexible mounting options (wall or pole) to adapt to various site conditions, reducing setup time and labor costs.
- IP55 rating safeguards internal components against dust ingress and low-pressure water jets, maintaining fiber integrity in rainy, dusty, or humid environments.
- Equipped with 1 main cable port (PG16), 1 blind port (PG13.5) for future expansion, and 12 drop cable ports—supporting comprehensive fiber routing from main lines to end-users..

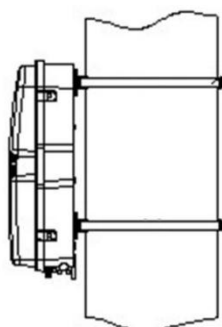
Specifications

Part No.	FDB-12E
Dimensions	247*202*77 mm
Material	PC+ABS
Main Cable Ports	1 × PG16
Blind Ports	1 × PG13.5
Drop Cable Ports	12 × Ø3mm
Patching Capacity	12 SC Adapters
Splicing Capacity	8/16 Fibers (Single-core)
Splice tray	1 Tray
Suitable Splitter	1×4 or 1×8 Micro PLC Splitter
IP Rating	IP55
Mounting	Wall / Pole Mount

Mounting Options









Wall-mounted



Pole-mounted

Standard Accessories

Picture	Name	Size	Quantity
	Wall-mounting Kit (for Wall mount Only)	/	3 Pairs
	Pole-mounting Kit (for Pole mount Only)	Clamp: Ø216mm	2 Pairs
	Spirally Wound Tube	L=50mm	1 PC
	Nylon Cable Tie	3×100mm	12 PCS
	Splice Sleeve	1.2/45mm	12 PCS
	Key	/	1 PC

Packing List

Part No.	Carton Size	PCS/CTN	G.W.
FDB-12E	42×45×51 CM	20	15 KGS