

## FAT-C12Y

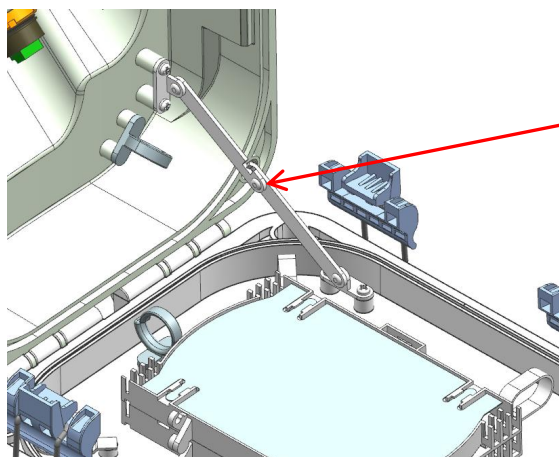
### Optical Terminal Enclosure w/ 12 Hardened Adapter Ports

#### Application

- The FAT-C12Y is designed for efficient fiber management at user access points in fiber optic networks. It provides an optimal solution for connecting distribution cables, reducing deployment time and costs.
- Rated to IP64, it is suitable for outdoor aerial, wall, or pole mount applications.



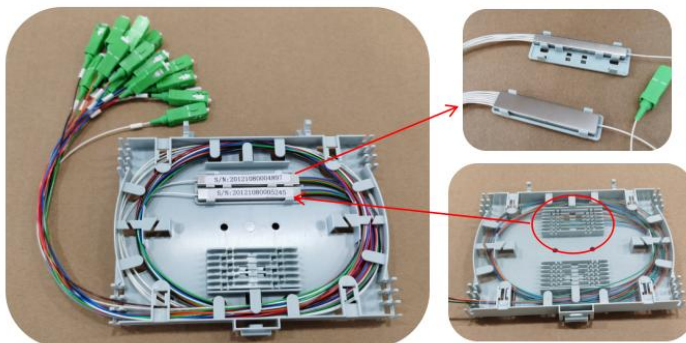
## Features & Benefits



This part could be auto-moved when open or close the cover. It supports the cover to keep in 90 degree when the open the cover is opened in at the maximum angle.

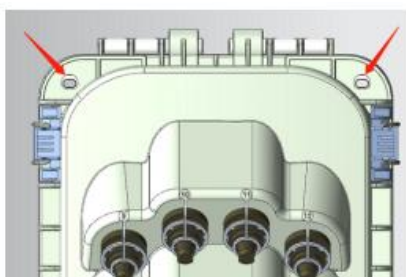


Auxiliary locking device, offer IP65 protection

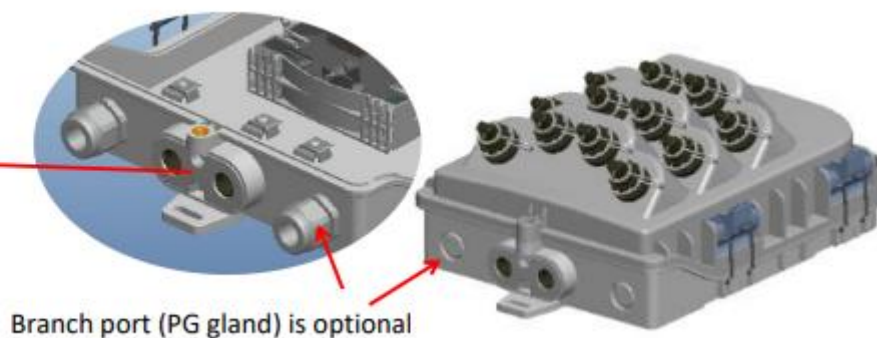


Splitter & Splice connection change flexible (options)

Two holes added on the cover for the screw pass through which makes the installation holes become external.



Mid-span port, suitable for uncut cable



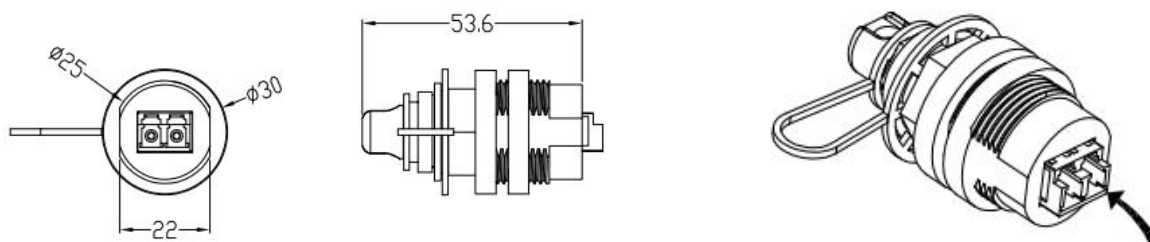
Branch port (PG gland) is optional

## Specifications

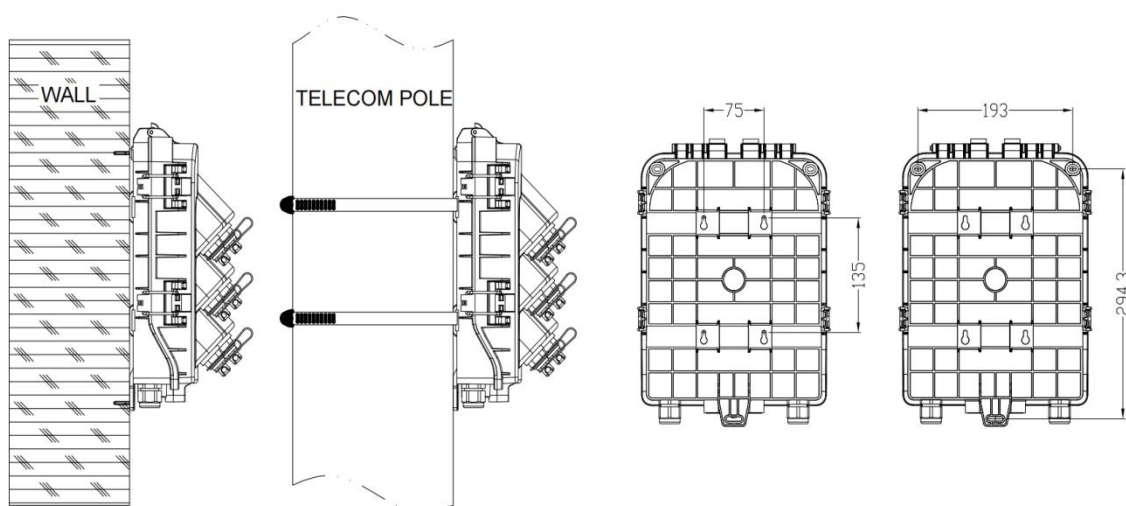
Part No.	FAT-C12Y
Dimensions	330x232x127 mm
Material	PC/ABS
Mid-span Ports	2 x Ø14mm
Blind Ports	2 x PG13.5
Terminal Ports	4/8/12 Ports
Terminal Capacity	4/8/12 SC or LC Duplex
Splice Capacity	2 x 12/24FO
Suitable Splitter for each Tray	1x8 / 1x16 Micro PLC Splitters
Mount method	Aerial / Wall / Pole Mount
Protection Grade	IP65

## Hardened Connector Applicable Size Description

- The following illustration provides size information specifically for the Hardened Connector that fits the enclosure. Please use Hardened Connectors of the appropriate size.



## Wall Mount and Pole Mount Installation Diagram



## Accessories

Picture	Name	Size	Qty
	Wall-mounting Kit (For wall mount only)	Screw: 30*Ø8mm	3 Pairs
	Pole-mounting Kit (For pole mount only)	Clamp: Ø216mm	2 PCS
	Aerial Hook Kit (For aerial mount only)	-	2 PCS
	Buffer Tube	Ø4*25(L)mm	2 PCS
	Small Clamp	Ø13-19mm	2 PCS
	Nylon Tie	100(L)x2(W)mm	4 PCS
	Splice sleeve	Ø1.2x45(L)mm	8/16/24 PCS

## Packing List

Part No.	Carton Size	PCS/CTN	G.W.
FAT-C12Y	51x36x52CM	6	10KGS